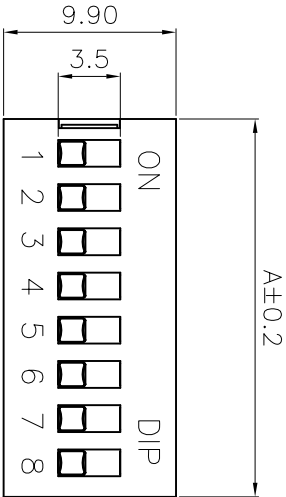
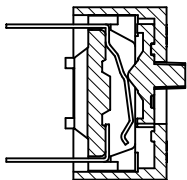


REV.	DESCRIPTION	DRAWN	CHECKED	APPROVED
A	NEW RELEASE	LJH 07/04/07'		

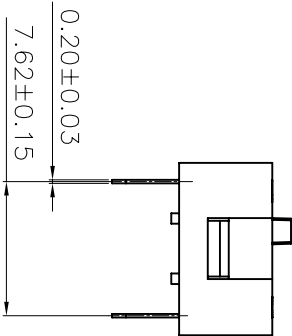
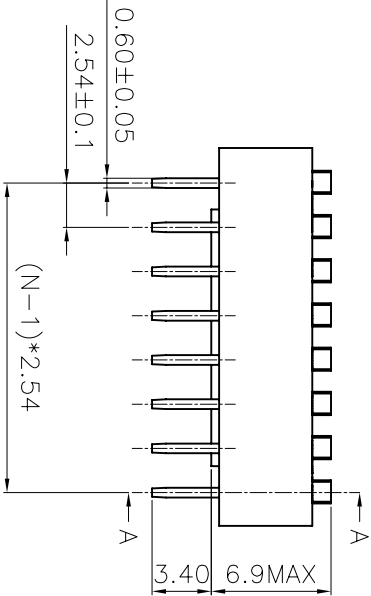
NOTES:

MATERIAL

- . Base: UL94V-0 PBT plus glass fiber reinforced.
- . Color: Black
- . Cover: UL94V-0 PBT plus glass fiber reinforced.
- . Color: Red,Black,Blue
- . Actuators: UL94V-0 PBT plus glass fiber reinforced.
- . Color: White
- . Contact: Phosphor bronze with 3 micro inches gold plating over nickel
- . Top seal: Polyester film
- . Potting material: Epoxy



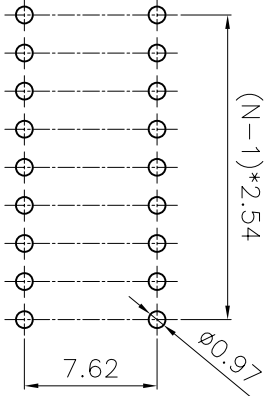
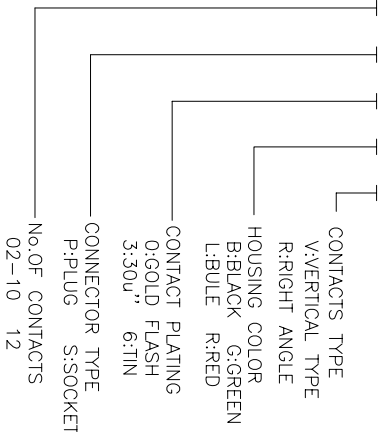
SECTION A-A



Position	DIM.A(mm)
2	6.64
3	9.18
4	11.72
5	14.2
6	16.8
7	19.34
8	21.88
9	24.42
10	26.96
12	32.04

PRODUCT NUMBER CODE:

KF1001- X X X X



RECOMMEND PCB LAYOUT(TOLERANCE=±0.05)

GENERAL TOLERANCE		ANGLE TOLERANCE	
X.	±0.60	X.	±5°
.X	±0.38	.X	±3°
.XX	±0.25	.XX	±2°
DRAWING TYPE	CUSTOMER		
SCALE	1:1	SHEET	1 OF 1
DRAWING NO.	KF1001-XXXXX		
PROJECTION		UNIT	TITLE
SHEET SIZE		A4	DIP SWITCH
SERIES		KF1001 SERIES	

DF 慈溪市凯峰电子有限公司

KAIFENG ELECTRONIC

KAIFENG ELECTRONIC CO.,LTD