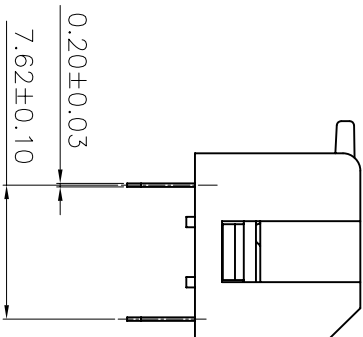
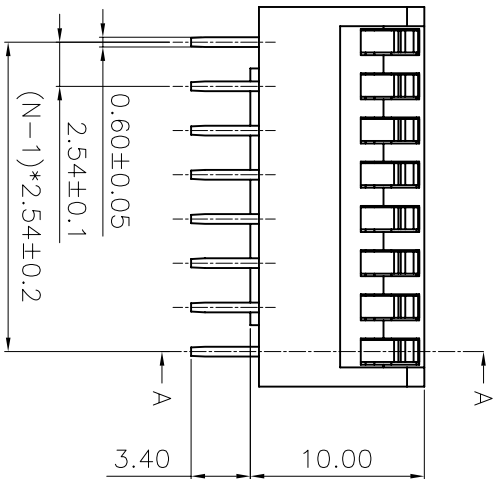
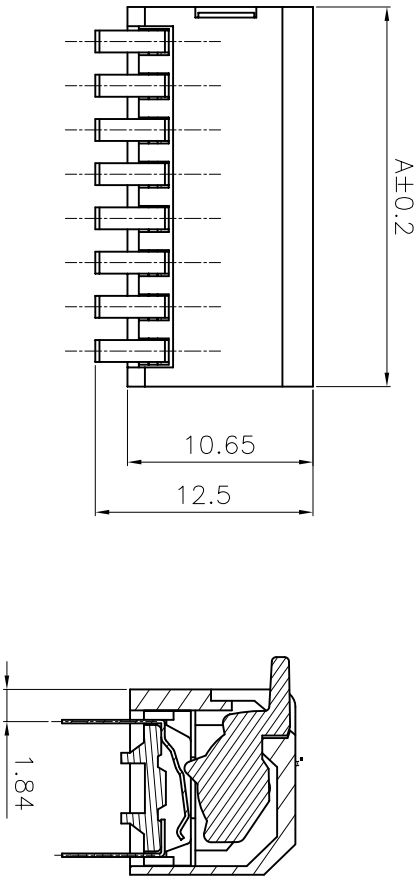


REV.	DESCRIPTION	DRAWN	CHECKED	APPROVED
A	NEW RELEASE	LJH 07/04/07'		

NOTES:

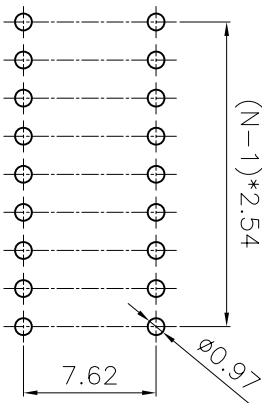
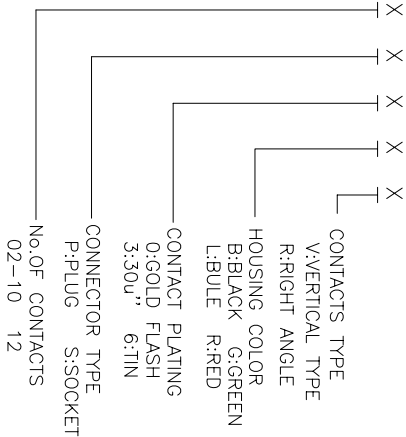
MATERIAL

- Base: UL94V-0 PBT plus glass fiber reinforced.
- Color: Black
- Cover: UL94V-0 PBT plus glass fiber reinforced.
- Color: Red,Black,Blue
- Actuators: UL94V-0 PBT plus glass fiber reinforced.
- Color: White
- Contact: Phosphor bronze with 3 micro inches gold plating over nickel
- Top seal: Polyester film
- Potting material: Epoxy



Position	DIM.A(mm)
2	6.64
3	9.18
4	11.72
5	14.2
6	16.8
7	19.34
8	21.88
9	24.42
10	26.96
12	32.04

PRODUCT NUMBER CODE:  
KF1002- X X X X



GENERAL TOLERANCE		ANGLE TOLERANCE	
X.	±0.60	X.	±5°
.X	±0.38	.X	±3°
.XX	±0.25	.XX	±2°
DRAWING TYPE		CUSTOMER	
SCALE	1:1	SHEET	1 OF 1
DRAWING NO.		KF1002-XXXXX	

PROJECTION		TITLE	
UNITS		DIP SWITCH	
SHEET SIZE		mm	
A4		SERIES	
KF1002		SERIES	

DIP		慈溪市凯峰电子有限公司	
KAIFENG ELECTRONIC		KAIFENG ELECTRONIC CO.,LTD	

RECOMMEND PCB LAYOUT(TOLERANCE=±0.05)

**DF** 慈溪市凯峰电子有限公司  
KAIFENG ELECTRONIC CO.,LTD