



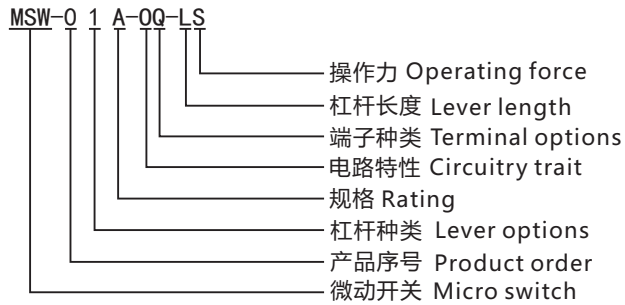
微动开关

Micro Switch

MSW Series



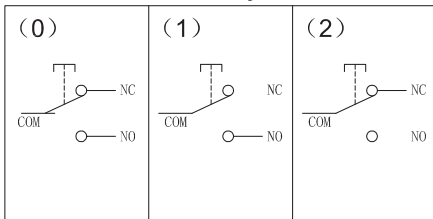
型号说明 Ordering Information



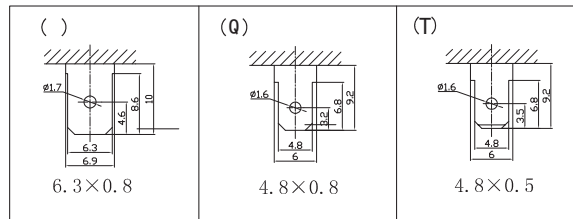
技术特性 Specification

- 规格 Rating: () 10A 125/250VAC
(A) 16A 125/250VAC
(B) 5A 125/250VAC
- 接触电阻 Contact Resistance: 20mΩ max
- 绝缘电阻 Insulation Resistance: 500VDC 100MΩ min
- 耐电压 Dielectric Strength: 1500VAC, 1Minute
- 环境温度 Ambient Temperature: -25°C ~ +85°C
- 电气寿命 Electrical Life: 100,000 Cycles

电路特性 Circuitry trait



端子种类 Terminal options



操作力 Operating force

L : 35g±15g
S: 160g±40g
H: 320g±80g



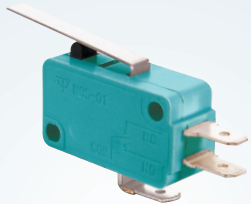
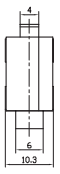
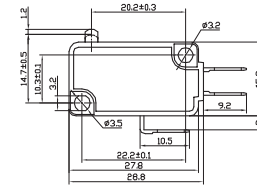
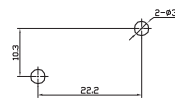
MSW-01 ON-(ON)

10A 125/250VAC

MSW-01A ON-(ON)

16A 125/250VAC

SPDT 3P



MSW-02 ON-(ON)

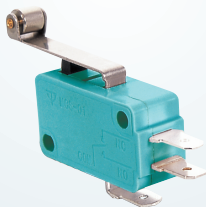
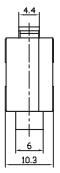
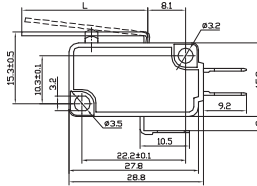
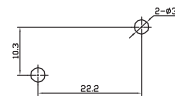
10A 125/250VAC

MSW-02A ON-(ON)

16A 125/250VAC

SPDT 3P

L=13; 27; 38; 53



MSW-03 ON-(ON)

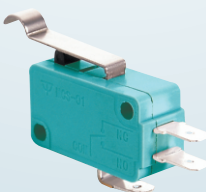
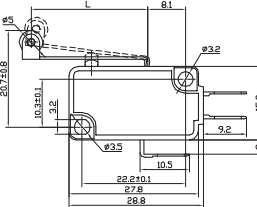
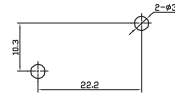
10A 125/250VAC

MSW-03A ON-(ON)

16A 125/250VAC

SPDT 3P

L=12; 25



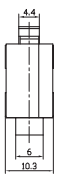
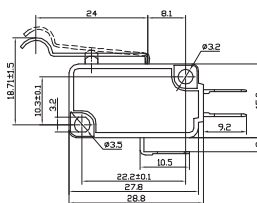
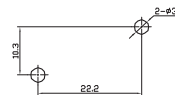
MSW-04 ON-(ON)

10A 125/250VAC

MSW-04A ON-(ON)

16A 125/250VAC

SPDT 3P





MSW-1 Series 技术特性 Specification

1.规格 Rating:() 5A 125/250VAC

(B) 3A 125/250VAC

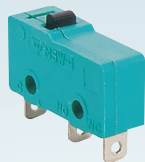
2.接触电阻 Contact Resistance:30mΩmax

3.绝缘电阻 Insulation Resistance:500VDC 100MΩmin

4.耐电压 Dielectric strength:1500VAC, 1Minute

5.环境温度 Ambient Temperature:-25℃ ~ +80℃

6.电气寿命 Electrical Life:100,000 Cycles

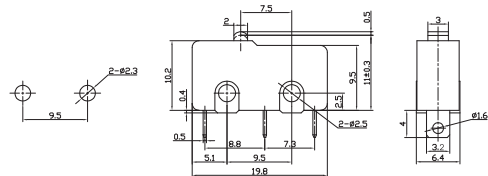
**MSW-11** ON-(ON)

5A 125/250VAC

MSW-11B ON-(ON)

3A 125/250VAC

SPDT 3P

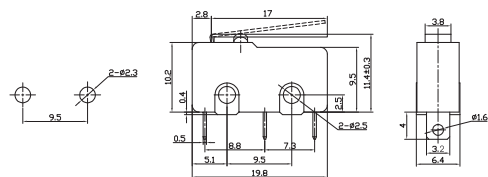
**MSW-12** ON-(ON)

5A 125/250VAC

MSW-12B ON-(ON)

3A 125/250VAC

SPDT 3P

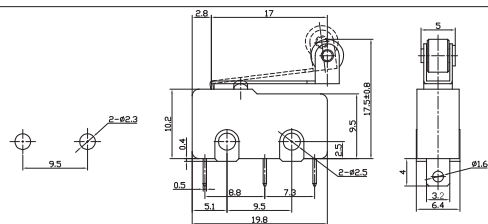
**MSW-13** ON-(ON)

5A 125/250VAC

MSW-13B ON-(ON)

3A 125/250VAC

SPDT 3P

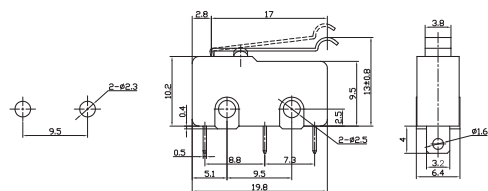
**MSW-14** ON-(ON)

5A 125/250VAC

MSW-14B ON-(ON)

3A 125/250VAC

SPDT 3P



MSW-2 Series 技术特性 Specification

1.规格 Rating:1A 125/250VAC

2.接触电阻 Contact Resistance:30mΩmax

3.绝缘电阻 Insulation Resistance:250VDC 100MΩmin

4.耐电压 Dielectric strength:1000VAC, 1Minute

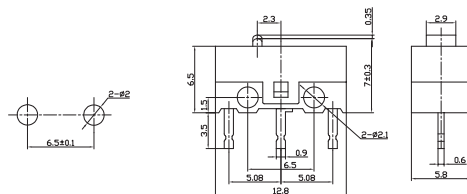
5.环境温度 Ambient Temperature:-25℃ ~ +65℃

6.电气寿命 Electrical Life:30,000 Cycles

**MSW-21**

1A 125/250VAC

SPDT 3P

**MSW-22**

1A 125/250VAC

SPDT 3P

