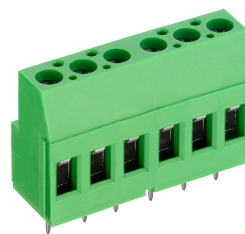


AK700/..-5.0-V-GREEN



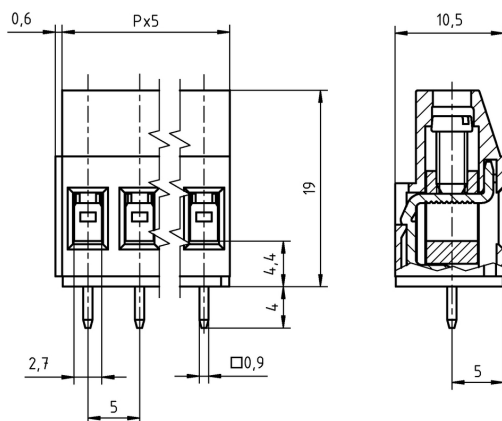
Technical Data

Wire Sizes		Insulating Material	
Solid min	0.2 mm ²	Material	PA 6.6
solid max	4.0 mm ²	Flammability Class	UL 94 V-0
Stranded (flexible) min		Temperatures	
Stranded (flexible) max		Operating Temperature	-30 °C - 105 °C
Stranded with Ferrule min		Wave Soldering Process	
Stranded with Ferrule max		Soldering Temperature, recommended	265 °C
Dimensions		Peak Soldering Time, recommended	3-4 s
Stripped Length	8.0 mm	Reflow Process	
PCB Hole Diameter	1.3 mm	Soldering Temperature, recommended	-
Materials		Peak Soldering Time, recommended	-
Clamp	Brass		
Screw	Steel		
Solder Tag	Copper Alloy		

Colours

GREEN	RAL6018	
GREY	RAL7016	
SLADE GREY	RAL7032	
BLUE	RAL5015	
LIGHT GREEN	similar RAL 6018	

Colours according to RAL, there may be variations on colour due to production conditions.
Special colours on request.



Order Data (Spacing 5.0 mm)

Poles	Width (mm)	Article Designation	Article Number	PU
2	10.60	AK700/2-5.0-V-GREEN	50700020201F	200
3	15.60	AK700/3-5.0-V-GREEN	50700030201F	200
4	20.60	AK700/4-5.0-V-GREEN	50700040201F	200
5	25.60	AK700/5-5.0-V-GREEN	50700050201F	200
6	30.60	AK700/6-5.0-V-GREEN	50700060201E	100
7	35.60	AK700/7-5.0-V-GREEN	50700070201E	100
8	40.60	AK700/8-5.0-V-GREEN	50700080201E	100
9	45.60	AK700/9-5.0-V-GREEN	50700090201E	100
10	50.60	AK700/10-5.0-V-GREEN	50700100201D	50
11	55.60	AK700/11-5.0-V-GREEN	50700110201D	50
12	60.60	AK700/12-5.0-V-GREEN	50700120201D	50

Accessories

Figure	Designation	Article Number
	Bridge, 2-pole, insulated, BRI/2-5.0/5.08-LIGHT GREY	50000000006
	Bridge, 3-pole, insulated, BRI/3-5.0/5.08-LIGHT GREY	50000000007
	Bridge, 2-pole, BR/2-5.0/5.08-L7.0	50000000008
	Schraubenabdeckung SC-AK700-GELB	50700000004

Ratings



Usegroup	B	C	D		
Rated Voltage	300 V	-	300 V	250 V	
Rated Current	20 A	-	-	24 A	
Rated Wire Size				min	max
solid	AWG 30-12	-	AWG 30-12	0.5 mm ²	4.0 mm ²
stranded	AWG 30-12	-	AWG 30-12	0.5 mm ²	2.5 mm ²
Torque	0.45 Nm	-	0.45 Nm	0.50 Nm	
Screw Size	M3	-	M3	M3	
Test Voltage	1.6 kV	-	1.6 kV	2.0 kV	